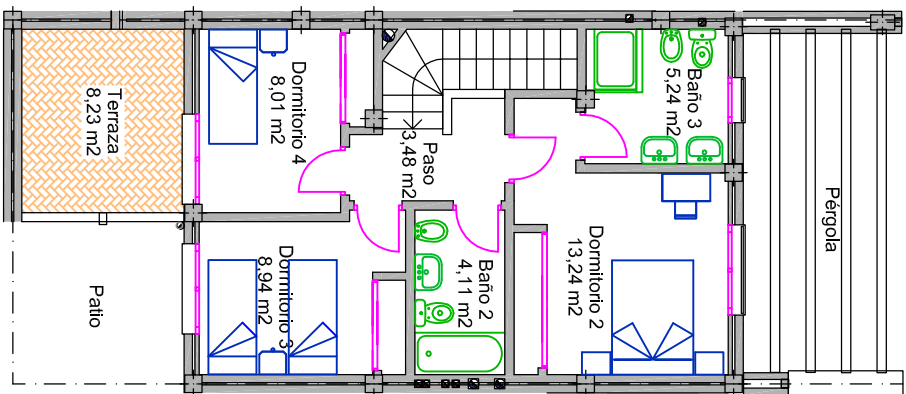
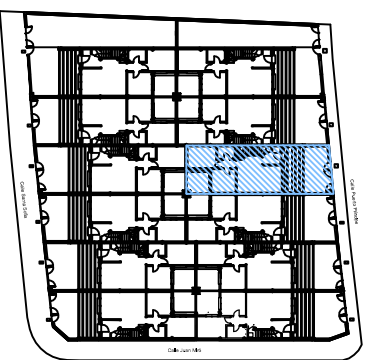


PRIMERA PLANTA



SEGUNDA PLANTA



VIVIENDA 10		
	SUP. ÚTIL	SUP. CONSTRUIDA
PLANTA BAJA	52.07 M <sup>2</sup>	65.16 M <sup>2</sup>
PLANTA PRIMERA	43.02 M <sup>2</sup>	56.11 M <sup>2</sup>
PATIO	8.07 M <sup>2</sup>	
JARDÍN-APARCAM	33.18 M <sup>2</sup>	
TERRAZA	8.23 M <sup>2</sup>	
<b>TOTAL</b>	<b>144.57 M<sup>2</sup></b>	<b>121.27 M<sup>2</sup></b>