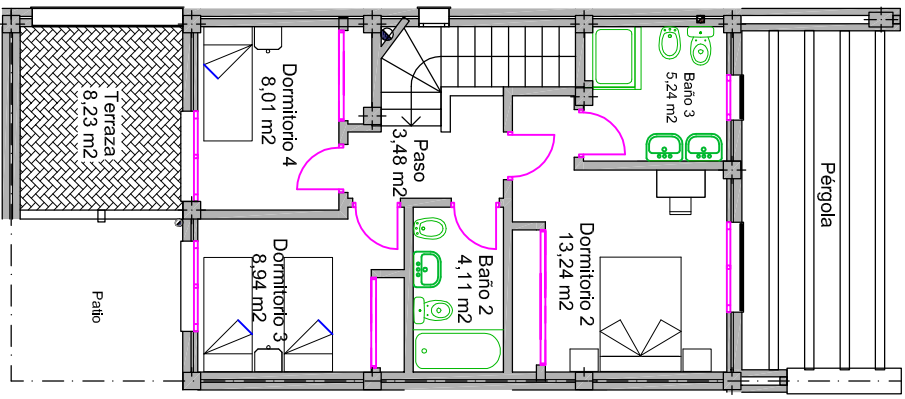
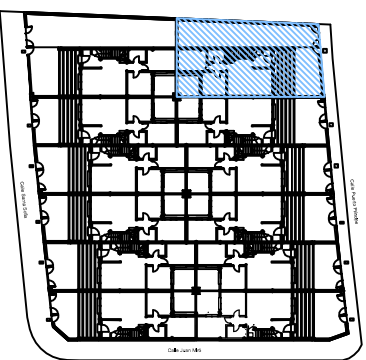


PRIMERA PLANTA



SEGUNDA PLANTA



VIVIENDA 12		SUP. UTIL.	SUP. CONSTRUIDA
PLANTA BAJA		52,07 M ²	66,73 M ²
PLANTA PRIMERA		43,02 M ²	57,54 M ²
PATIO		8,07 M ²	
JARDÍN-APARCAM		86,79 M ²	
TERRAZA		8,23 M ²	
TOTAL		198,18 M²	124,27M²