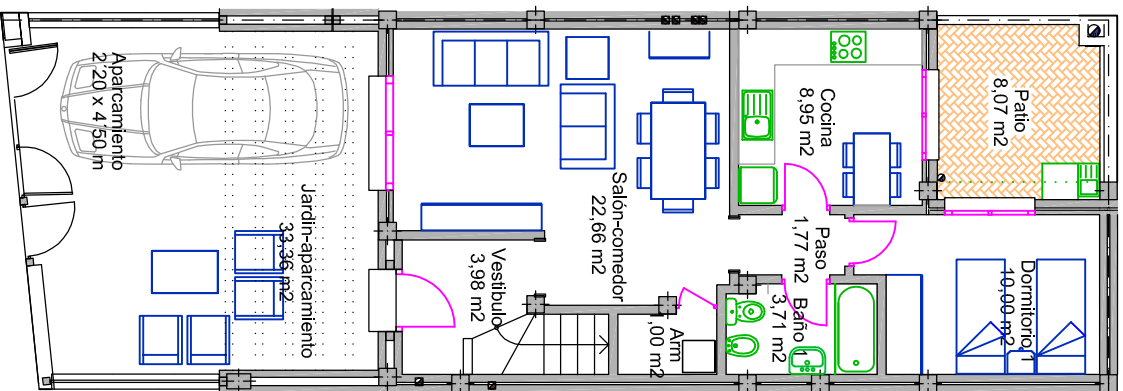
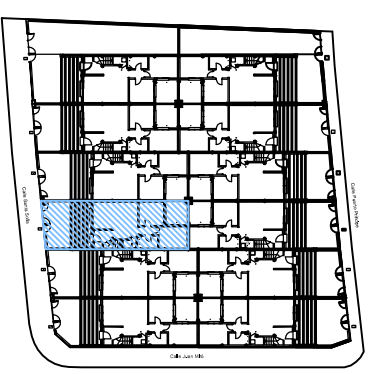
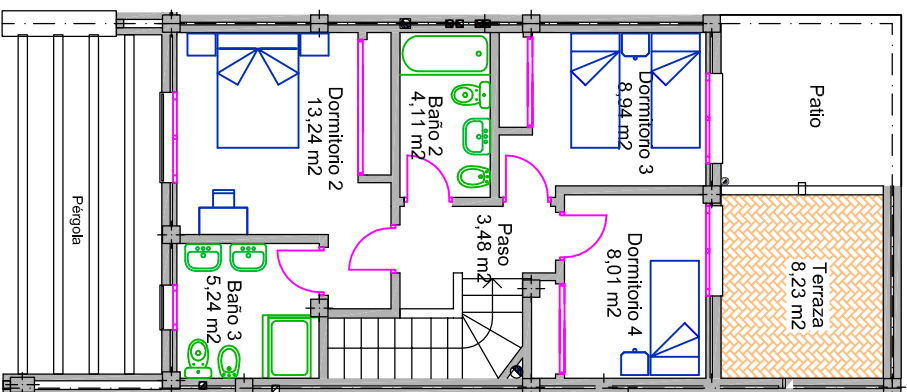


PRIMERA PLANTA



SEGUNDA PLANTA



VIVIENDA 4

	SUP. ÚTIL	SUP. CONSTRUIDA
PLANTA BAJA	52.07 M ²	65.16 M ²
PLANTA PRIMERA	43.02 M ²	56.11 M ²
PATIO	8.07 M ²	
JARDÍN-APARCAM	33.36 M ²	
TERRAZA	8.23 M ²	
TOTAL	144.75 M²	121.27 M²