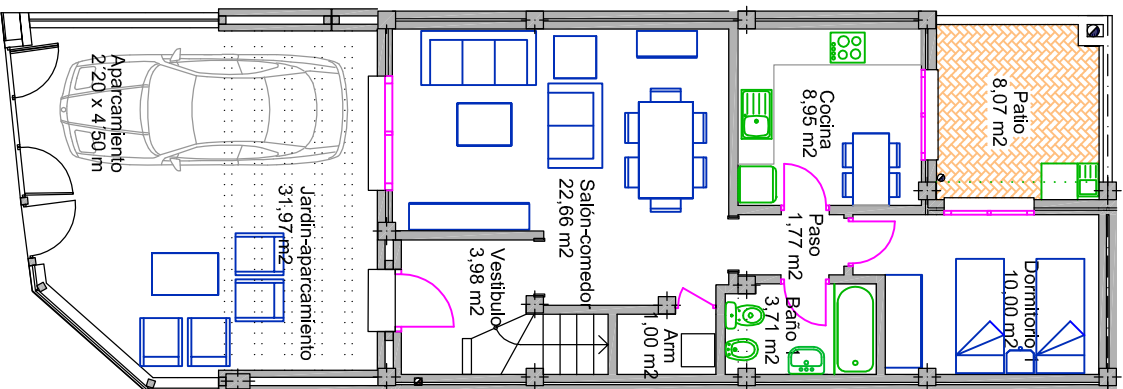
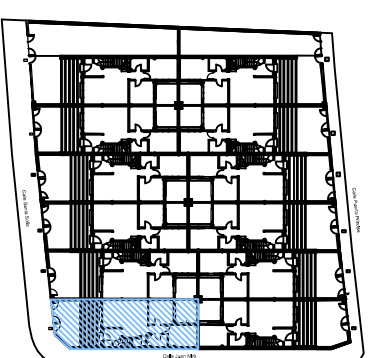
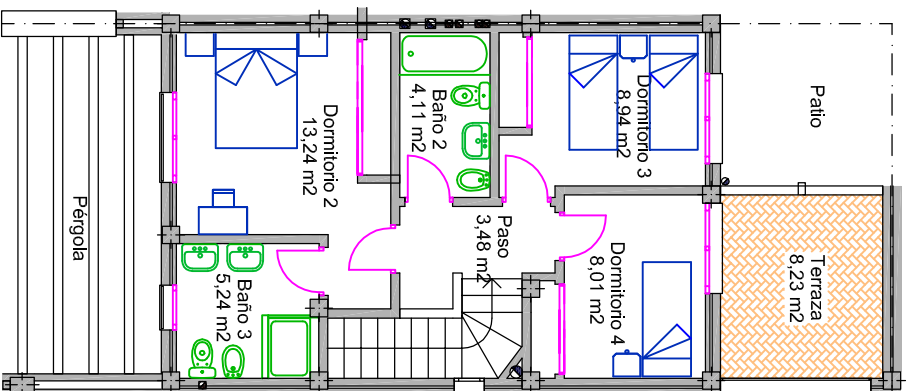


PRIMERA PLANTA



SEGUNDA PLANTA



VIVIENDA 6

	SUP. ÚTIL	SUP. CONSTRUIDA
PLANTA BAJA	52.07 M <sup>2</sup>	66.73 M <sup>2</sup>
PLANTA PRIMERA	43.02 M <sup>2</sup>	57.54 M <sup>2</sup>
PATIO	8.07 M <sup>2</sup>	
JARDÍN-APARCAM	31.97 M <sup>2</sup>	
TERRAZA	8.23 M <sup>2</sup>	
<b>TOTAL</b>	<b>143.36 M<sup>2</sup></b>	<b>124.27 M<sup>2</sup></b>